



Conetto anatomico senza luer Conetti medicali

C O N A N A S L

Minimo: 3.000

Colori: Trasparente

Materiale: PC - Policarbonato medicale

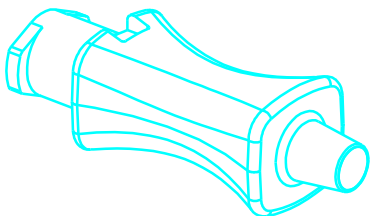
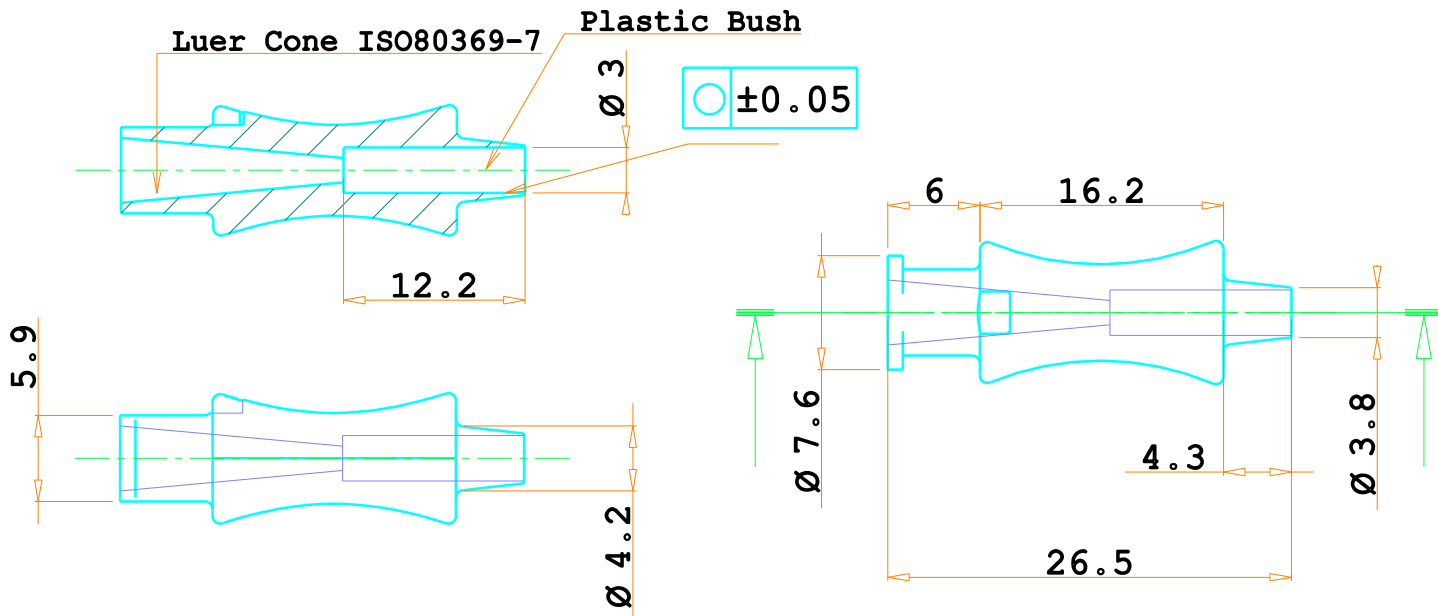
Descrizione

Conetto anatomico, impugnatura anatomica per aghi

Note

Disponibile anche in altri materiali e dimensioni su richiesta.



COD.	GAUGES	ØCANULA	COLORE	NOTE
CONANASL	0,75 mm		Blu trasparente	



MATERIAL	CODE
PC	CONANACSxx
MAKROLON	CONANACSxx M
ZYLAR	CONANACSxx Y

CONANASL	WITHOUT LUER
CONANACSS	WITH THREAD
CONANACSF	WITHOUT THREAD
CONANACS	UNIVERSAL
CODE	DESCRIPTION

Changes	Signature	Date
3		
2		
1		

 CARRO LUIGI Srl 25030 RUDIANO (BS) Via Lavoro & Industria	<u>Mould Denomination</u>		<u>N° Cavities</u>	<u>Order</u>		
	-----		---	---		
M0803.04 rev.00	<u>Member Denomination</u>			<u>Customer code</u>		
	UNIVERSAL ANATOMIC HUB			---		
<u>General Tolerances</u> ISO 2768-mk 0.5 < x < 6 +0.1 6 < x < 30 +0.2 30 < x < 120 +0.3 120 < x < 400 +0.5	<u>Date</u> 02/12/2022	<u>Molding Material</u> SEE TABLE	<u>C.tion</u>	<u>Machine</u>	<u>Mould Weight</u>	<u>Customer part</u>
	<u>Drawn By</u> Cassani M.	<u>Approved By</u> Direzione C.A.		<u>Eyebolts</u>	<u>Mould Dimensions</u>	SEE TABLE
	<u>N°Par.</u>	<u>N°Pez.</u>	<u>Dimensions</u>	<u>Material</u>	<u>Treatment</u>	<u>Scale</u>
	---	---	-----	-----	-----	-----
						<div style="border: 1px solid black; padding: 5px; display: inline-block;">A4</div> Sheet -/-

This drawing is property of Carro Luigi srl who will safeguard its rights according to the civil and penal provision of the law