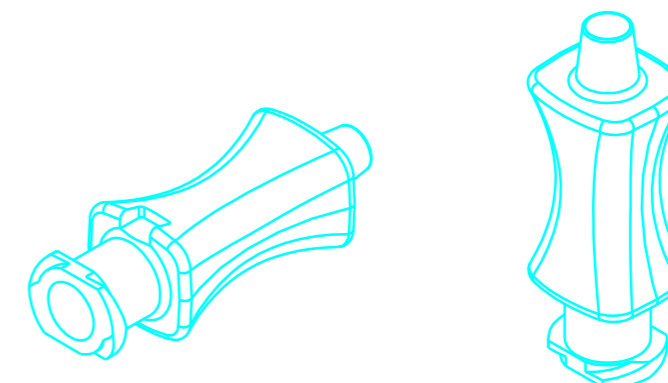


WITHOUT
THREAD HUB

| MATERIAL | CODE |
|----------|------------|
| PC | CONANAxx |
| MAKROLON | CONANAxx M |
| ZYLAR | CONANAxx Y |



| CONANA16 | 16G | 1.60 | 1.30 |
|----------|-------|------|------|
| CONANA15 | 15G | 1.80 | 1.50 |
| CONANA14 | 14G | 2.00 | 1.70 |
| CODE | GAUGE | ØA | ØB |

| CONANA16N SF | 16G | 1.80 | 1.35 |
|---------------|-------------------|------|------|
| CONANA16 SF | 16G | 1.60 | 1.30 |
| CONANA15 SF | 15G | 1.80 | 1.50 |
| CONANA14CS SF | 14G COAX. SPECIAL | 2.00 | 2.35 |
| CONANA14C SF | 14G COAX. | 2.00 | 2.25 |
| CONANA14 SF | 14G | 2.00 | 1.70 |
| CODE | GAUGE | ØA | ØB |

CARRO LUIGI Srl
25030 RUDIANO (BS)
Via Lavoro & Industria

M0803.04 rev.00

| General Tolerances | | ISO 2768-mk |
|--------------------|-----------|-------------|
| 0.5 | < x < 6 | +0.1 |
| 6 | < x < 30 | +0.2 |
| 30 | < x < 120 | +0.3 |
| 120 | < x < 400 | +0.5 |

Mould Denomination

N° Cavities

Order

Member Denomination

Customer Code

ANATOMIC HUB 14G-15G-16G

Date

Molding Material

C.tion

Machine

Mould Weight

02/12/2022

SEE TABLE

Drawn by

Approved by

Mould Dimensions

Cassani M.

Direzione C.A.

N° Par.

N° Pez.

Scale

Customer Part

SEE TABLE

A3

Sheet

1/1

1/1

3

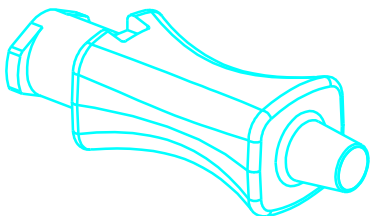
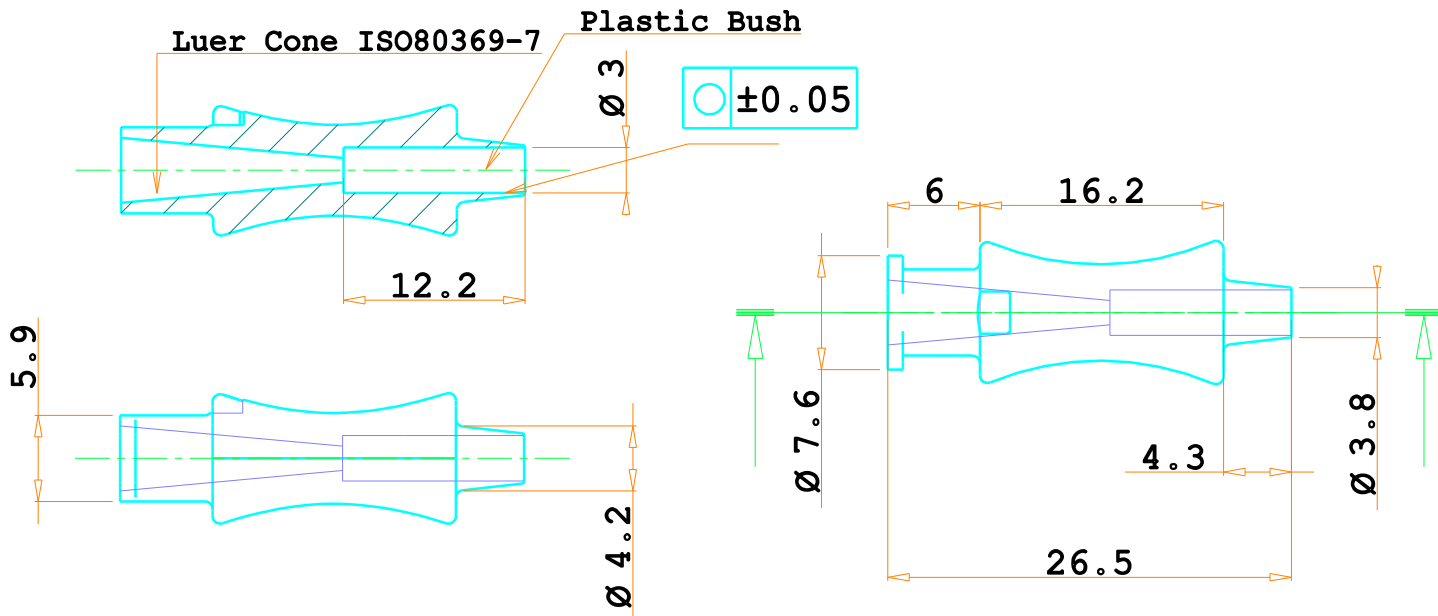
2

1

Signature

Date


Changes



| MATERIAL | CODE |
|----------|--------------|
| PC | CONANACSxx |
| MAKROLON | CONANACSxx M |
| ZYLAR | CONANACSxx Y |

| CONANASL | WITHOUT LUER |
|-----------|----------------|
| CONANACSS | WITH THREAD |
| CONANACSF | WITHOUT THREAD |
| CONANACS | UNIVERSAL |
| CODE | DESCRIPTION |

| Changes | | | Signature | Date |
|---------|-------------|------|-----------|------|
| N° | Description | Date | | |
| 3 | | | | |
| 2 | | | | |
| 1 | | | | |

 **CARRO LUIGI Srl**
 25030 RUDIANO (BS)
 Via Lavoro & Industria

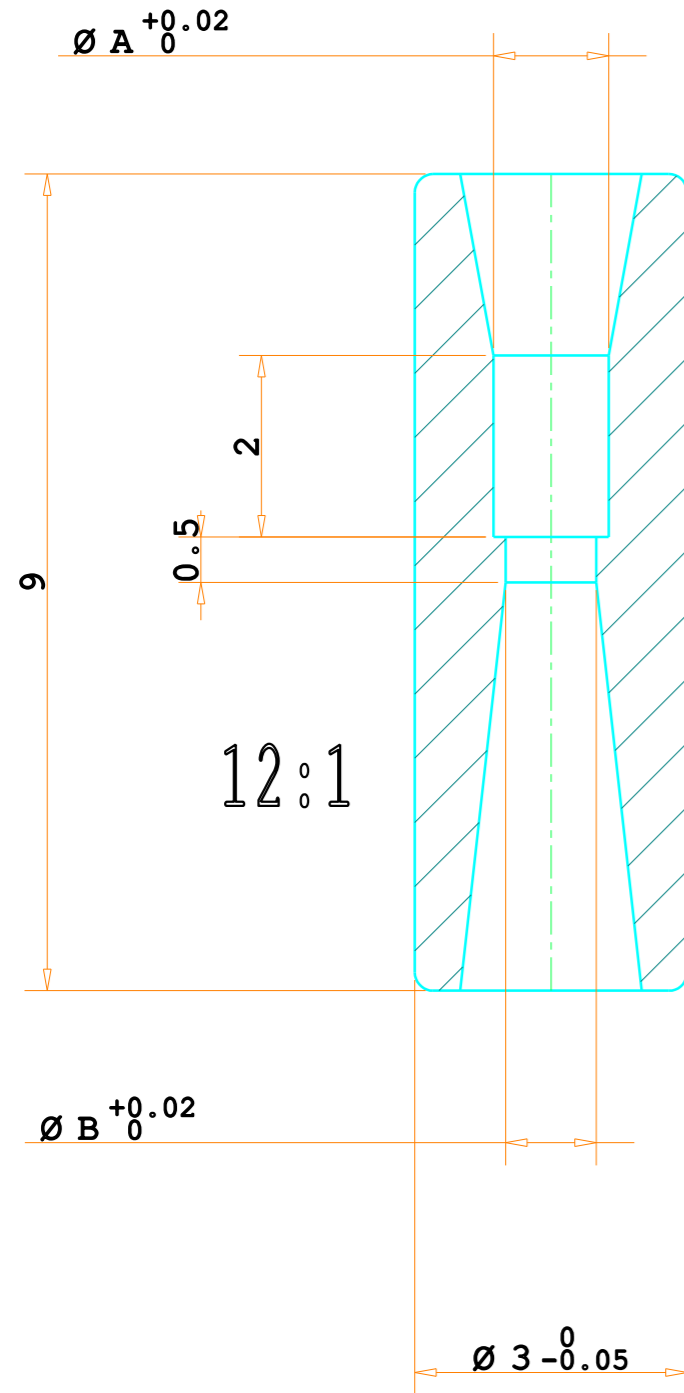
M0803.04 rev.00

General Tolerances **ISO 2768-mk**

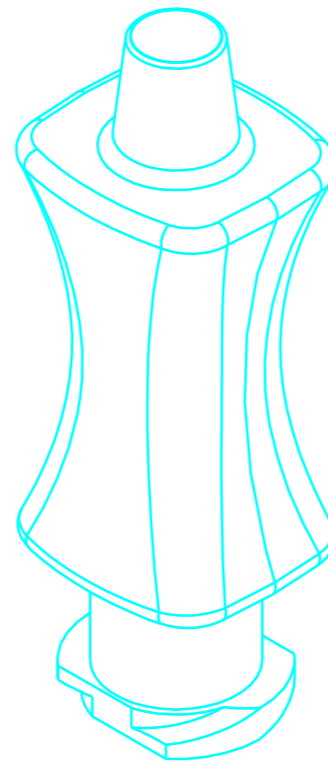
| | | |
|---------------|------|---|
| 0.5 < x < 6 | +0.1 | . |
| 6 < x < 30 | +0.2 | . |
| 30 < x < 120 | +0.3 | . |
| 120 < x < 400 | +0.5 | . |

| | | | | | | | | |
|--|-------------------------|--------------------|-----------------|----------------------|-------------------------|-------|-------|--|
| <u>Mould Denomination</u> | | | | <u>N° Cavities</u> | <u>Order</u> | | | |
| UNIVERSAL ANATOMIC HUB | | | | --- | --- | | | |
| <u>Member Denomination</u> | | | | <u>Customer code</u> | | | | |
| UNIVERSAL ANATOMIC HUB | | | | --- | | | | |
| <u>Date</u> | <u>Molding Material</u> | <u>C.tion</u> | <u>Machine</u> | <u>Mould Weight</u> | <u>Customer part</u> | | | |
| 02/12/2022 | SEE TABLE | --- | --- | --- | SEE TABLE | | | |
| <u>Drawn By</u> | | <u>Approved By</u> | | <u>Eyebolts</u> | <u>Mould Dimensions</u> | | | |
| Cassani M. | | Direzione C.A. | | --- | --- | | | |
| <u>N°Par.</u> | <u>N°Pez.</u> | <u>Dimensions</u> | <u>Material</u> | <u>Treatment</u> | <u>Scale</u> | | | |
| --- | --- | --- | --- | --- | --- | | | |
| <table border="1"> <tr> <td rowspan="2">A4</td> <td>Sheet</td> </tr> <tr> <td>-/-</td> </tr> </table> | | | | | A4 | Sheet | -/- | |
| | | | | | | A4 | Sheet | |
| -/- | | | | | | | | |
| <p>This drawing is property of Carro Luigi srl who will safeguard its rights according to the civil and penal provision of the law</p> | | | | | | | | |

PLASTIC BUSH



Luer cone ISO80369-7



12:1

WITH THREAD HUB

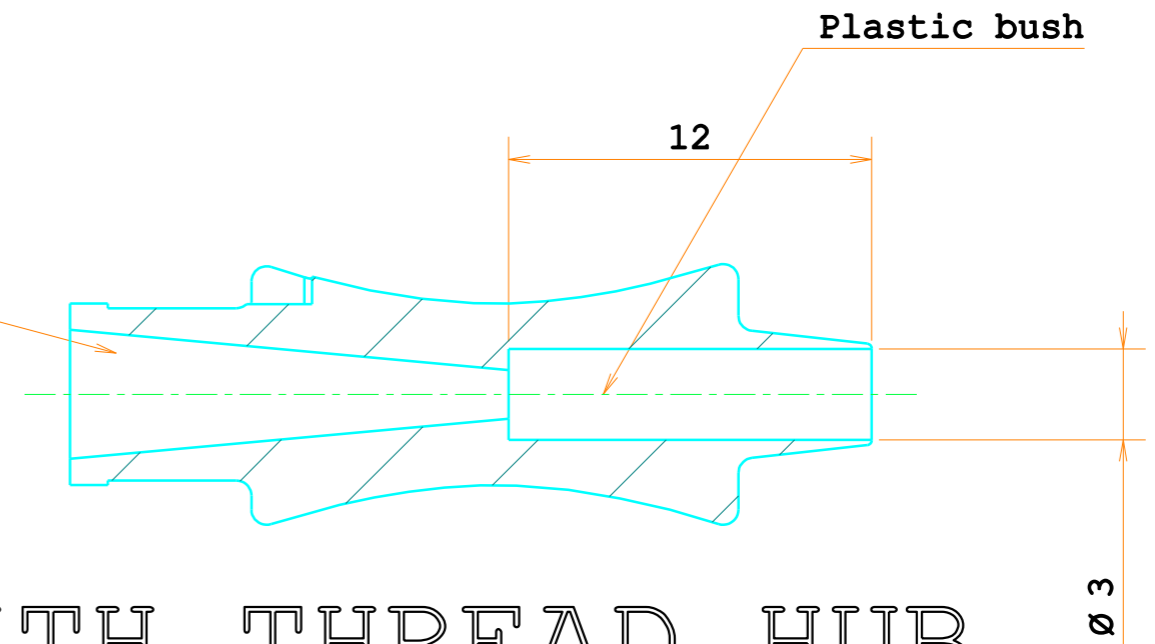


TABLE 1

| | | | |
|-------------|-------|------|------|
| CONANA27 | 27G | 0.40 | 0.25 |
| CONANA26 | 26G | 0.45 | 0.30 |
| CONANA25 | 25G | 0.50 | 0.30 |
| CONANA24 | 24G | 0.55 | 0.35 |
| CONANA23 | 23G | 0.60 | 0.35 |
| CONANA22 | 22G | 0.70 | 0.45 |
| CONANA21 | 21G | 0.80 | 0.55 |
| CONANA20 | 20G | 0.90 | 0.65 |
| CONANA19 | 19G | 1.10 | 0.80 |
| CONANAØ1.35 | 18G | 1.35 | 1.00 |
| CONANA18 | 18G | 1.27 | 1.00 |
| CONANA17 | 17G | 1.47 | 1.10 |
| CODE | GAUGE | ØA | ØB |

TABLE 2

| | | | |
|-------------|------------------|-------|-------|
| CONANA22C | 22G COAX | Ø0.95 | Ø0.75 |
| CONANA20C | 20G COAX | Ø1.15 | Ø0.90 |
| CONANA18GCS | 18G COAX SPECIAL | Ø1.20 | Ø1.00 |
| CONANA18C | 18G COAX | Ø1.52 | Ø1.32 |
| CONANA16C | 16G COAX | Ø1.85 | Ø1.65 |
| CODE | GAUGE | ØA | ØB |

COAXIAL PLASTIC BUSH

PLASTIC BUSH

| MATERIAL | CODE |
|----------|------------|
| PC | CONANAxX |
| MAKROLON | CONANAxX M |
| ZYLAR | CONANAxX Y |

CARRO LUIGI Srl
25030 RUDIANO (BS)
Via Lavoro & Industria

M0803.04 rev.00

General Tolerances ISO 2768-mk
0.5 < x < 6 +0.1 .
6 < x < 30 +0.2 .
30 < x < 120 +0.3 .
120 < x < 400 +0.5 .

Mould Denomination

N° Cavities

Order

Member Denomination

Customer Code

UNIVERSAL ANATOMIC HUB WITH THREAD + PLASTIC BUSH/COAXIAL

Customer Part
SEE TABLE

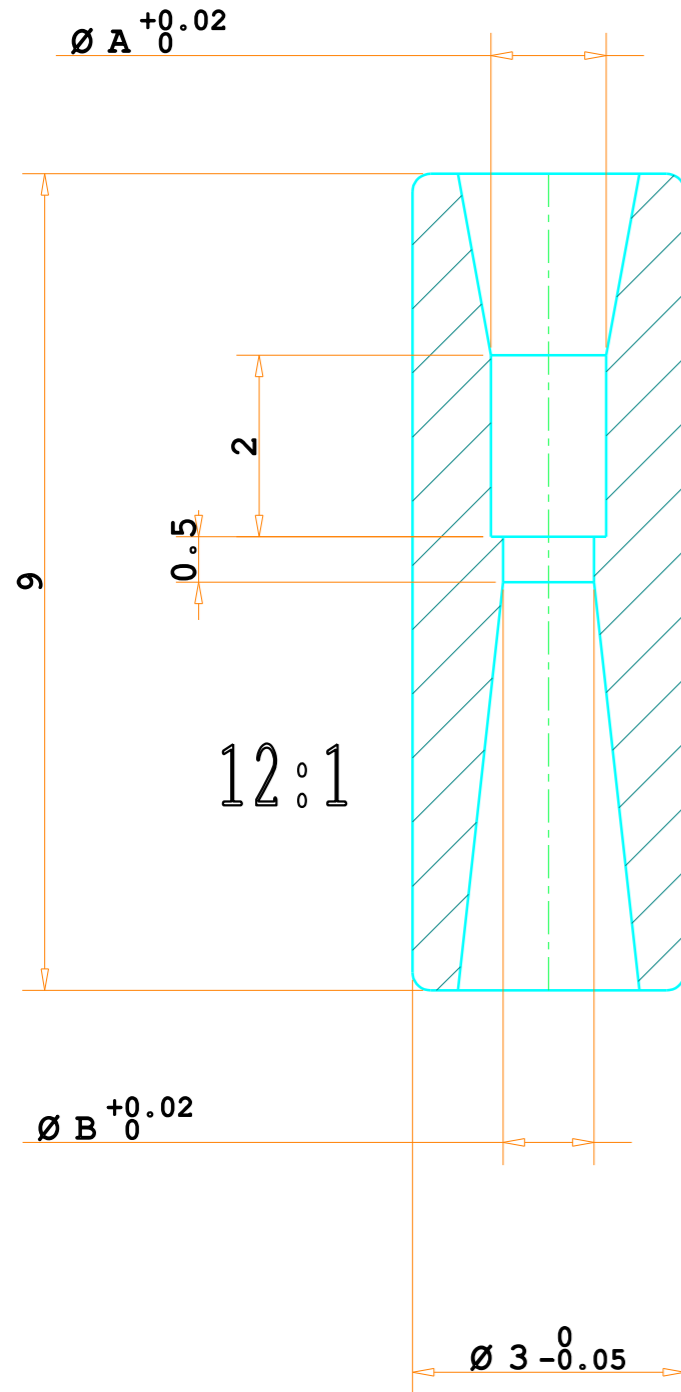
Date 02/12/22 Molding Material SEE TABLE C.tion Machine Mould Weight

Drawn by Cassani M. Approved by Direzione C.A. Eyebolts Mould Dimensions

N° Par. N° Pez. Dimensions Material Treatment Scale 12:1

A3 Sheet 1/1

PLASTIC BUSH



Luer cone ISO80369-7

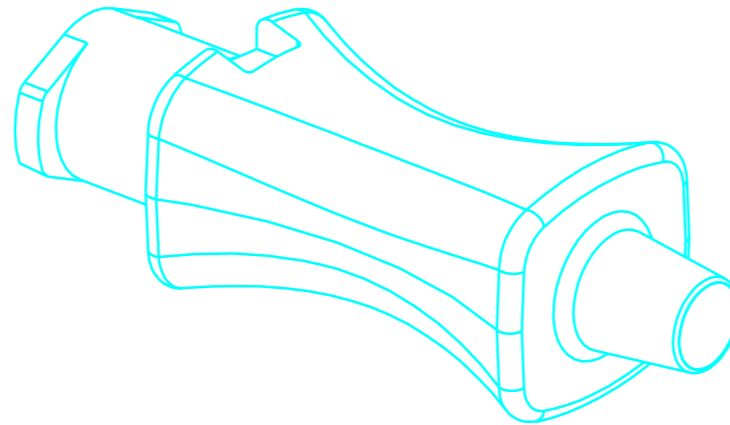
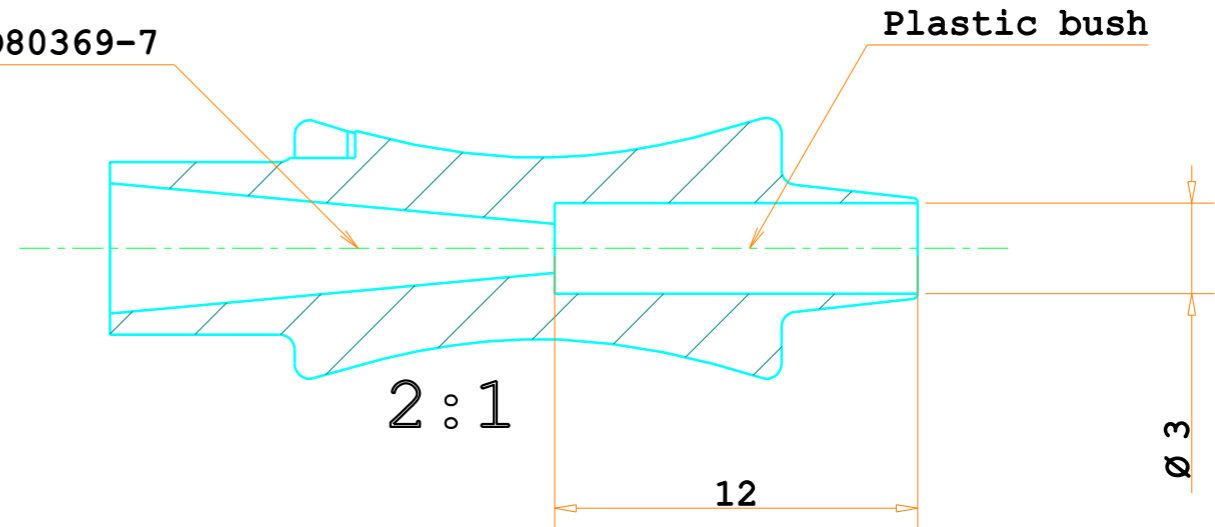


TABLE 1

| | | | |
|---------------|-------|------|------|
| CONANA27SF | 27G | 0.40 | 0.25 |
| CONANA26SF | 26G | 0.45 | 0.30 |
| CONANA25SF | 25G | 0.50 | 0.30 |
| CONANA24SF | 24G | 0.55 | 0.35 |
| CONANA23SF | 23G | 0.60 | 0.35 |
| CONANA22SF | 22G | 0.70 | 0.45 |
| CONANA21SF | 21G | 0.80 | 0.55 |
| CONANA20SF | 20G | 0.90 | 0.65 |
| CONANA19SF | 19G | 1.10 | 0.80 |
| CONANAØ1.35SF | 18G | 1.35 | 1.00 |
| CONANA18SF | 18G | 1.27 | 1.00 |
| CONANA17SF | 17G | 1.47 | 1.10 |
| CODE | GAUGE | ØA | ØB |

TABLE 2

| | | | |
|--------------|------------------|-------|-------|
| CONANA22CSF | 22G COAX | Ø0.95 | Ø0.75 |
| CONANA20CSF | 20G COAX | Ø1.15 | Ø0.90 |
| CONANA18GCSF | 18G COAX SPECIAL | Ø1.20 | Ø1.00 |
| CONANA18CSF | 18G COAX | Ø1.52 | Ø1.32 |
| CONANA16CSF | 16G COAX | Ø1.85 | Ø1.65 |
| | GAUGE | ØA | ØB |

COAXIAL PLASTIC BUSH

PLASTIC BUSH

| MATERIAL | CODE |
|----------|------------|
| PC | CONANAxX |
| MAKROLON | CONANAxX M |
| ZYLAR | CONANAxX Y |

CARRO LUIGI Srl
25030 RUDIANO (BS)
Via Lavoro & Industria

M0803.04 rev.00

General Tolerances ISO 2768-mk
0.5 < x < 6 +0.1
6 < x < 30 +0.2
30 < x < 120 +0.3
120 < x < 400 +0.5

Mould Denomination

N° Cavities

Order

Member Denomination

Customer Code

UNIVERSAL ANATOMIC HUB + PLASTIC BUSH/COAXIAL

Date

Molding Material

C.tion

Machine

Mould Weight

Customer Part

02/12/22

SEE TABLE

SEE TABLE

Drawn by Cassani M.

Approved by Direzione C.A.

N° Par.

N° Pez.

Dimensions

Material

Treatment

Scale

12:1

A3 Sheet 1/1