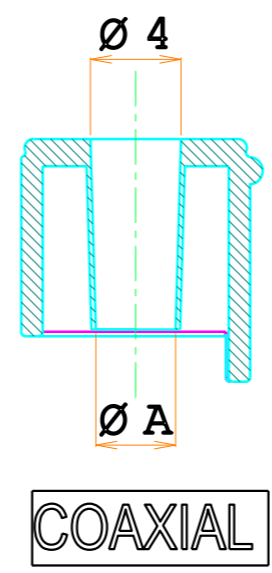
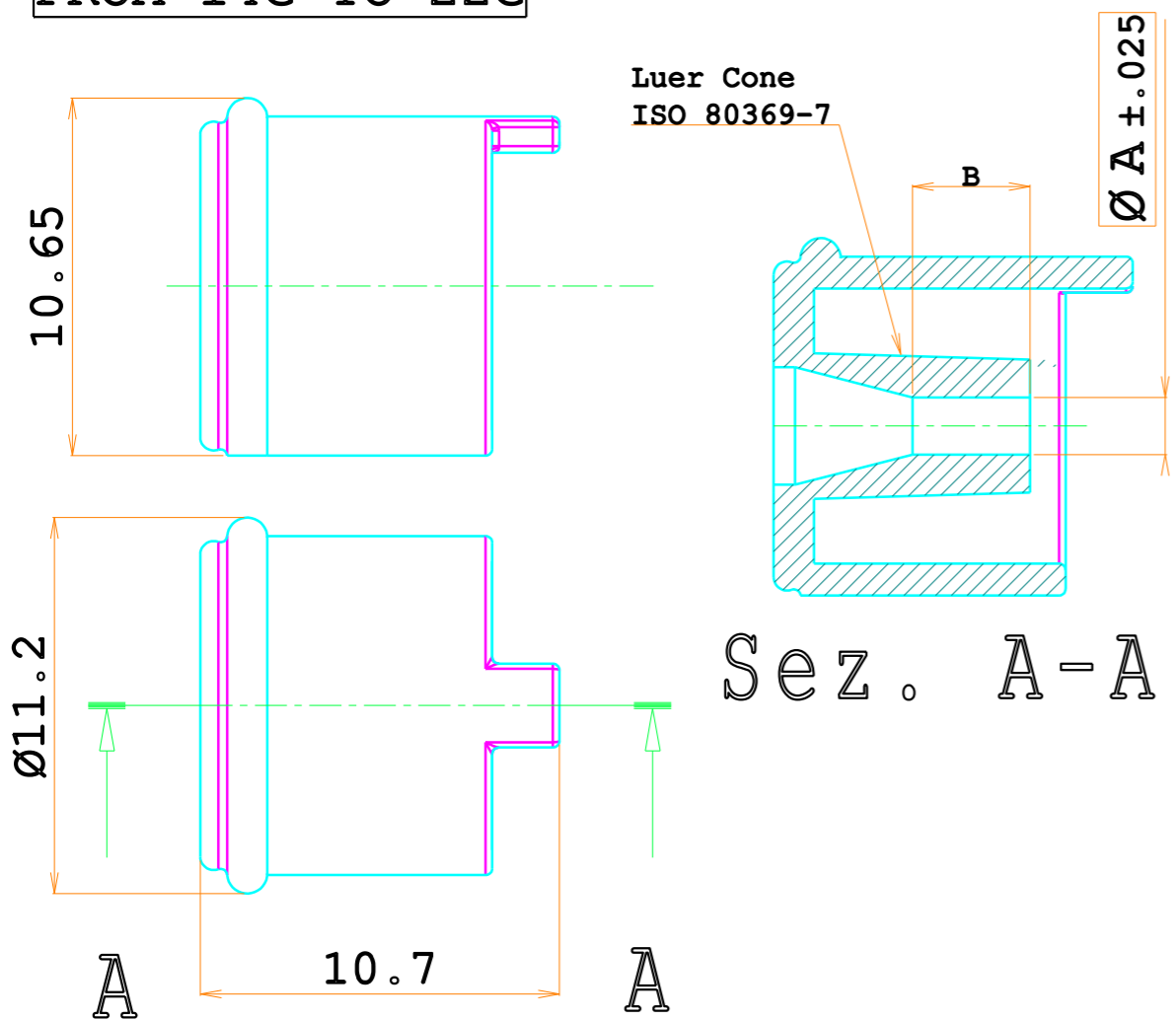


ONLY FOR GAUGES
FROM 23G TO 27G



COAXIAL

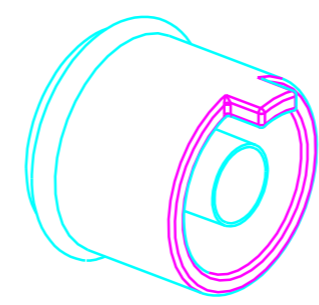
ONLY FOR GAUGES
FROM 14G TO 22G



Luer Cone
ISO 80369-7

Sez. A-A

VALID FOR
CONSULTATION



CODE	COLOUR	GAUGE	Ø A	B
TAPTON27T	TRANSPARENT GREY	27 G	Ø 0.25	-
TAPTON27	GREY	27 G	Ø 0.25	-
TAPTON26T	TRANSPARENT BROWN	26 G	Ø 0.30	-
TAPTON26	BROWN	26 G	Ø 0.30	-
TAPTON25T	TRANSPARENT ORANGE	25 G	Ø 0.30	-
TAPTON25	ORANGE	25 G	Ø 0.30	-
TAPTON24	MAUVE	24 G	Ø 0.35	-
TAPTON23T	TRANSPARENT LIGHT BLUE	23 G	Ø 0.35	-
TAPTON23	LIGHT BLUE	23 G	Ø 0.35	-
TAPTON22	BLACK	22 G	Ø 0.45	2
TAPTON22C	BLACK	22G Coax.	Ø 0.75	//
TAPTON21T	TRANSPARENT LIGHT GREEN	21 G	Ø 0.55	2
TAPTON21	LIGHT GREEN	21 G	Ø 0.55	2
TAPTON20	YELLOW	20 G	Ø 0.65	2.5
TAPTON20C	YELLOW	20G Coax.	Ø 0.95	//
TAPTON19	BEIGE	19 G	Ø 0.80	2.5
TAPTON19C	BEIGE	19G Coax.	Ø 1.10	//
TAPTON18	PINK	18 G	Ø 1.00	2.5
TAPTON18C	PINK	18G Coax.	Ø 1.32	//
TAPTON17	RED	17 G	Ø 1.10	2.5
TAPTON16	WHITE	16 G	Ø 1.30	3.5
TAPTON16C	WHITE	16G Coax.	Ø 1.65	//
TAPTON15	BLUE	15 G	Ø 1.50	3.5
TAPTON14	DARK GREEN	14 G	Ø 1.70	3.5
TAPTON14C	DARK GREEN	14G Coax.	Ø 2.00	//

3 2 1
Signature
Date

Changes

CARRO LUIGI Srl
25030 RUDIANO (BS)
Via Lavoro & Industria

M0803.04 rev.00

General Tolerances		ISO 2768-mk
0.5 < x < 6	+0.1	.
6 < x < 30	+0.2	.
30 < x < 120	+0.3	.
120 < x < 400	+0.5	.

<u>Mould Denomination</u>		<u>N° Cavities</u>		<u>Order</u>	
---		---		---	
<u>Member Denomination</u>		<u>Customer Code</u>		<u>Customer Part</u>	
ROUND CAP		---		SEE TABLE	
<u>Date</u>	<u>Molding Material</u>	<u>C.tion</u>	<u>Machine</u>	<u>Mould Weight</u>	<u>Mould Dimensions</u>
10/01/2022	ABS	---	---	---	---
<u>Drawn by</u>	<u>Approved by</u>		<u>Eyebolts</u>	<u>Material</u>	<u>Treatment</u>
Cassani M.	Direzione C.A.	---	---	---	---
<u>N° Par.</u>	<u>N° Pez.</u>	<u>Dimensions</u>	<u>Scale</u>	<u>Scale</u>	
---	---	---	---	---	

A3 Sheet 1/1